

Symphony Orchestra

All Symphony concerts are located at the Port Angeles High School Auditorium
304 East Park Avenue, Port Angeles
Dress Rehearsal - 10 am
Pre-concert Chat - 6:40 pm
Concert - 7:30 pm



Symphony Concert No. 1 November 3, 2012 - 7:30 pm

ALFORD	Colonel Bogey March
FRANZ WAXMAN	Rebecca (<i>suite from the film</i>)
ELMER BERNSTEIN	To Kill a Mockingbird (<i>suite from the film</i>)
GERSHWIN	Concerto in F Peter Mack, soloist

Symphony Concert No. 2 December 8, 2012 - 7:30 pm

Holiday Concert

Program to include:

LEONTOVITCH	Carol of the Bells
GRIEG	Norwegian Dance No. 2
HUMPERDINCK	Hansel and Gretel: Evening Prayer
TRADITIONAL	The Twelve Days of Christmas

Symphony Concert No. 3 February 2, 2013 - 7:30 pm



BEETHOVEN	Overture, "Fidelio"
PROKOFIEV	Summer Day
MOZART	Concerto in A for Clarinet and Orchestra, K. 622 Sean Osborn, soloist
MENDELSSOHN	Symphony No. 5 in d, Op. 107, "Reformation"

Symphony Concert No. 4

March 9, 2013 - 7:30 pm

BEETHOVEN	Contredances, WoO 14
WAGNER	Siegfried: Forest Murmurs
J. STRAUSS, Jr.	Tales from the Vienna Woods
VAUGHAN WILLIAMS	Symphony No. 3, "Pastoral"

Symphony Concert No. 5

April 13, 2013 - 7:30 pm



SULLIVAN	Overture, "Iolanthe"
SAINT-SAËNS	Concerto No. 3 in b for Violin and Orchestra Monique Mead, soloist
LIADOV	Kikimora
SIBELIUS	The Bard
RAVEL	Mother Goose Suite

All Programs Subject to Change

Photo of Peter Mack by Michelle Smith-Lewis
Photo of Adam Stern by Collins Photography

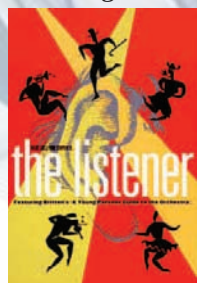
Special Events

Season Opener Spectacular

September 22, 2012 - 7:00 pm

Port Angeles High School Auditorium,
304 E. Park Ave, Port Angeles

The Magic Circle Mime Company



Magic Circle Mime Company is regarded as one of today's premier family attractions. Their highly acclaimed performances, which unite the concert orchestra with visual theater, are consistently praised for imaginative and innovative content. They have performed with virtually every major orchestra in North America, as well as with orchestras in Europe and the Far East. The conductor has prepared a program of music from the various artistic disciplines but finds his efforts complicated by the unexpected participation of two audience members! Musical challenges, disputes, and revelations are just part of the action as these two characters and the audience learn about the orchestra, it's music, and the art of listening. FEATURING: BRITTEN: The Young Person's Guide to the Orchestra, BERNSTEIN: Candide: Overture, SHOSTAKOVICH: The Age of Gold: Polka, BIZET: Carmen: Les Toréadors

In association with:

Alliance Artist Management
98B Long Highway, Little Compton, RI 02837

Co-Sponsored by:



Concert & Cuisine

September 29, 2012

An elegant dinner concert at C'est si bon Restaurant
Reservations Required

Young Artist Competition

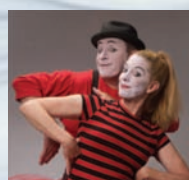
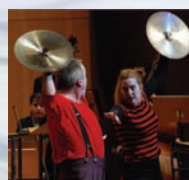
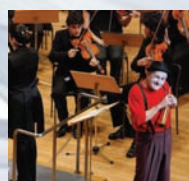
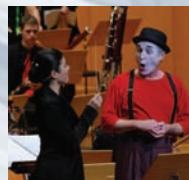
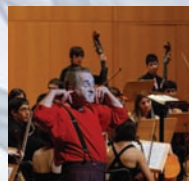
January 26, 2013 - 9:30 am

Holy Trinity Lutheran Church
301 Lopez, Port Angeles

Applause! Auction

March 16, 2013

The Orchestra's most important fund-raiser of the year. Exquisite dinner with live and silent auctions.
Reservations Required



Chamber Orchestra

Friday night concerts are located at
Holy Trinity Lutheran Church
301 Lopez, Port Angeles
Saturday night concerts are located at
Sequim Worship Center
640 N. Sequim Avenue, Sequim

Chamber Orchestra Concert No. 1

Friday, October 12, 2012 - 7:00 pm

Saturday, October 13, 2012 - 7:00 pm

Italy Through the Ages

BOLZONI	Minuet and Gavotte
VIVALDI	Sonata in e for Cello and Piano Mia Frederickson, cello, Adam Stern, piano
GIULIANI	Concerto in A for Guitar & Orchestra Michael Nicoletta, soloist
RESPIGHI	Ancient Airs and Dances, Suite No. 3

Chamber Orchestra Concert No. 2

Friday, January 11, 2013 - 7:00 pm

Saturday, January 12, 2013 - 7:00 pm

Voices Sacred and Profane

A concert of music for solo voices with piano and orchestra, featuring mezzo-soprano Jenny Knapp Parce and baritone Erich Parce. Selections will include sacred music by Vivaldi, *Two Ballades* by Hindemith, and the delightful "profane cantata" *Le Bal Masqué* (The Masked Ball) by Poulenc.

Chamber Orchestra Concert No. 3

Friday, May 10, 2013 - 7:00 pm

Saturday, May 11, 2013 - 7:00 pm

Mozart! All-Mozart program.

Adagio and Fugue in c, K. 546
Quintet for Piano and Winds, K. 452
Piano Quartet No. 1 in g, K. 478
Symphony No. 33 in B-flat, K. 319

Bus Service from Sequim to Concerts

Enjoy the convenience of riding on a comfortable charter bus from Sequim to our concerts at the Port Angeles High School Auditorium.

The cost for 5 round-trips from your choice of two convenient Sequim locations is \$55.00.

You will find a place on the order form to include bus transportation along with your season ticket order.